

LED Lighting Range

LED LIGHT HOUSING

• For use if surface mounting lights

Round Housing

■ 70mm x70mm

Code Finish

LRH21 Polished chrome look

LRH27 Stainless steel look

Square Housing

■ 64mm x 64mm

Code Finish

LSH21 Polished chrome look

LSH27 Stainless steel look

Rectangle Corner Housing

■ 55mm diameter cave

Code Finish

LCH27 Stainless steel look

LCHIR27 Stainless steel look

For use with **infrared sensor LSSIR**

Triangle Corner Housing

■ 55mm diameter cave

Code Finish

LTCH27 Stainless steel look

LTCHIR27 Stainless steel look

For use with **infrared sensor LSSIR**

EXTENSION LEADS

Extension Leads

Code Finish

LEL100 Red/Black

LEL200 Red/Black

Length

1 metre

2 metres

Internal Cabinet Lighting

Code Finish

LDIC412 412mm

LDIC562 562mm

LDIC862 862mm

LDIC1162 1162mm

Contrast

Cool

Cool

Cool

Cool

DRIVERS

Drivers

■ Can be connected to 2-6 lights

Code Wattage

LD3W33 1-9 watts

LD2W66 1-18 watts

For 1-3 lights

For 4-6 lights

Driver for Infrared Sensor Switch (LSSIR)

Code Wattage

LDIR For 1-6 lights

DRILL BIT

Code Diameter

LDB54 54mm

PLASTIC CHANNEL

Plastic Channel

■ White

■ Includes adhesive tape

Code SIZE

LPC1W 12mm X 7mm

LPC2W 9.2mm X 2.9mm

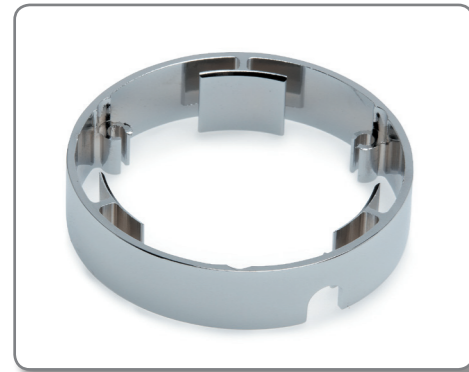
LENGTH

1 metre

2 metres

NEW

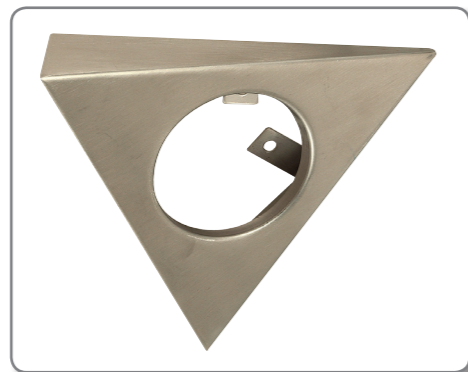
NEW



LRH21 pictured



LCH27 pictured



LTCH27 pictured



LEL100 pictured



LDIR pictured



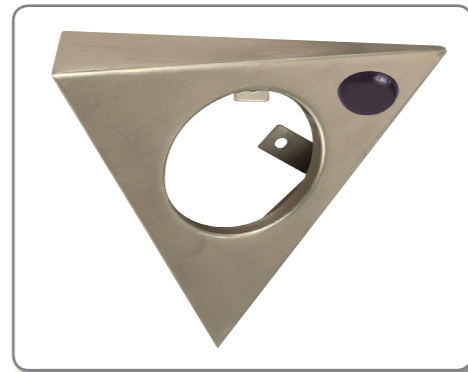
LPC1W pictured



LSH21 pictured



LCHIR27 pictured



LTCHIR27 pictured



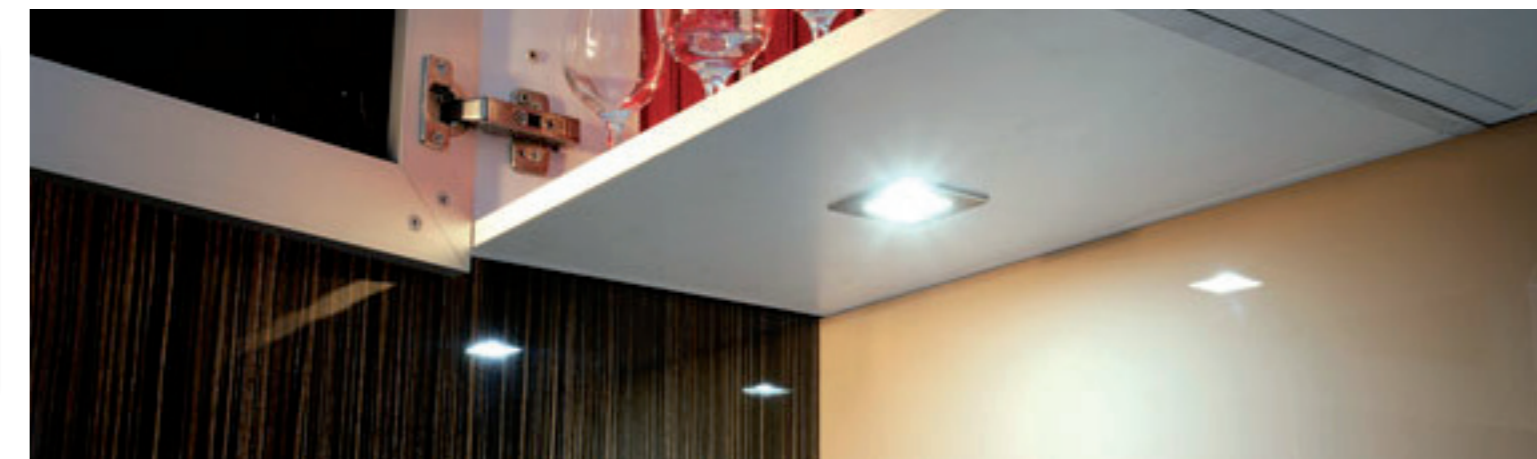
1. LDIC412, 2.LDIC562, 3.LDIC862, 4.LDIC1162 pictured



LDB54 pictured



LPC2W pictured



Melbourne
94 Bell Street
Preston VIC 3072
P. 03 9495 8900
F. 03 9416 8878

Sydney
1/41-43 Vore Street
Silverwater NSW 2128
P. 02 9737 0255
F. 02 9647 2474

Hobart
45 Sunderland Street
Moonah TAS 7009
P. 03 6272 9400
F. 03 6272 9600

Brisbane
2/60 Enterprise Place
Tingalpa QLD 4173
P. 07 3890 8611
F. 07 3890 3375

Perth
43 Prosperity Ave
Wangara WA 6065
P. 08 9303 2644
F. 08 9303 9788

Adelaide
41 Weaver Street
Edwardstown SA 5093
P. 08 8276 3800
F. 08 8276 3755



www.wilbrad.com.au

35
YEARS OF
SERVICE

**WILSON
BRADLEY &**
SERVICE & CIVILITY




LED LIGHTING RANGE

EXCLUSIVE TO WILSON & BRADLEY

Wilson & Bradley’s exciting range of 3 watt LED down lights includes an assortment of innovative and reliable solutions for the kitchen, bathroom, office and interior cabinets. The range of lighting is exclusive to Wilson & Bradley and incorporates touch technology to enable the lights to be activated directly by the user to dim, or to turn the system on and off.

This LED range is energy saving and boasts a 50,000 hour lifetime. The range includes both warm and cool contrast lighting as well as round and square lights in two finishes: polished chrome and stainless steel looks.

The range includes many new items, keep an eye out for  marked throughout the brochure.



LED LIGHTS

- Lights available in cool white and warm white
- Lights sold individually
- Each light is 3 watt & equivalent to a 20 watt halogen light

Round Lights

- 3 watt
- Recess Mount: 55mm x 15mm
- Surface Mount: 70mm

Code	Finish	Contrast
LRC21	Polished chrome look	Cool white
LRC27	Stainless steel look	Cool white
LRW21	Polished chrome look	Warm white
LRW27	Stainless steel look	Warm white

Square Lights

- 3 watt
- Recess Mount: 55mm x 15mm
- Surface Mount: 64mm

Code	Finish	Contrast
LSC21	Polished chrome look	Cool white
LSC27	Stainless steel look	Cool white
LSW21	Polished chrome look	Warm white
LSW27	Stainless steel look	Warm white

Round Glass Light

- 2.5 watt
- Tempered glass surface
- Recess Mount: 55mm x 15mm
- Surface Mount: 70mm

Code	Finish	Contrast
LRCG27	Stainless steel look	Cool White
LRWG27	Stainless steel look	Warm White

- Recess Mount 55mm x 15mm
- Surface Mount 64mm hole required

TOUCH LIGHTS

Round Lights

- 3 watt
- Recess Mount: 55mm x 15mm
- Surface Mount: 70mm

Code	Finish	Contrast
LRTC21	Polished chrome look	Cool white
LRTC27	Stainless steel look	Cool white
LRTW21	Polished chrome look	Warm white
LRTW27	Stainless steel look	Warm white

Square Lights

- 3 watt
- Recess Mount: 55mm x 15mm
- Surface Mount: 64mm

Code	Finish	Contrast
LSTC21	Polished chrome look	Cool white
LSTC27	Stainless steel look	Cool white
LSTW21	Polished chrome look	Warm white
LSTW27	Stainless steel look	Warm white

DIMMER LED LIGHTS

Square Dimmer Lights

- 3 watt
- 3 step dimmer lights
- Recess Mount: 55mm x 15mm
- Surface Mount: 64mm

Code	Finish	Contrast
LSDC21	Polished chrome look	Cool white
LSDC27	Stainless steel look	Cool white
LSDW21	Polished chrome look	Warm white
LSDW27	Stainless steel look	Warm white

Round Dimmer Lights

- 3 watt
- 3 step dimmer lights
- Recess Mount: 55mm x 15mm
- Surface Mount: 70mm

Code	Finish	Contrast
LRDC21	Polished chrome look	Cool white
LRDC27	Stainless steel look	Cool white
LRDW21	Polished chrome look	Warm white
LRDW27	Stainless steel look	Warm white

SWITCHES

Touch Switches

- Stand alone touch on/off switches

Code	Finish
LTSPC	Polished chrome look
LTSSS	Stainless steel look

Dimmer Switches

- Diameter: 29.5mm
- Hole size: 15mm
- Stand alone dimmer switches

Code	Finish
LTDPC	Polished chrome look
LTDSS	Stainless steel look

Sensor Switch

- Stand alone sensor switch
- Wave and on/off function
- Includes 2 plastic housings

Code	Finish
LSSIR	Plastic



LRTC27 pictured



LSDW27 pictured

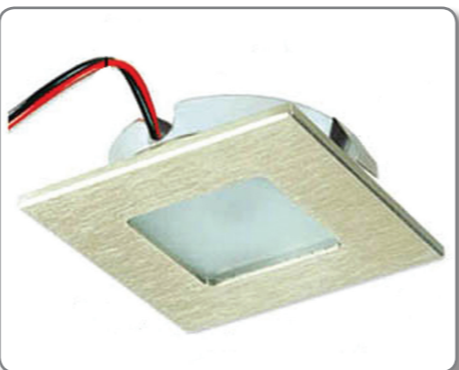


LTSSS pictured



LRC27 pictured

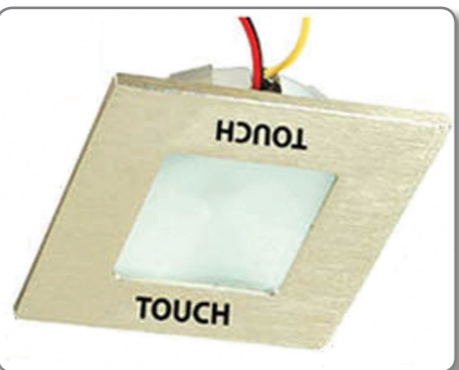
LRC21 pictured



LSC27 pictured



LRCG27 pictured



LSTC27 pictured



LRDW27 pictured

LSDW27 pictured



LSSIR pictured