



COMMERCIAL COLOUR RANGE

FORMICA® COMMERCIAL COLOUR RANGE takes the hard work out of colour schemes. The simple palette reflects current trends, combining prints and solids that are easy to mix and match. Colours come in a large sized Decorated Board perfect for commercial use and a Pearl finish conceals minor scratches and finger marks. Coordinating Melamine and ABS Formica Edging is also available. With a simple spectrum of modern choices, the Formica Commercial Colour Range can help you create impressive interiors every time.



COMMERCIAL COLOUR RANGE



Warm White



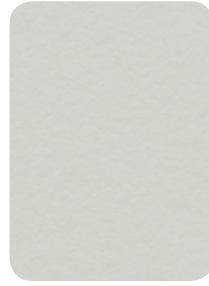
Streetlight



Bliss Shitake
N



Silver Strata



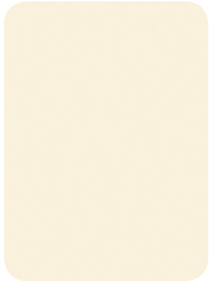
Seal Grey



Dawn Grey



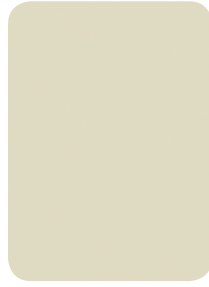
Gentle Beige



Antique Wiluna White



Prairie Beige



Flaxon



Rock Salt



Papiro Chalk



Snow Elm
N



Natural Oak



Refined Oak



Idyllic
N



Hotham Oak
N



Habitat
N



Lemon Tree



Fini Blonde



Golden Beech



Euro Beech



Cherry



South West Jarrah



Fini Chocolate



Vicenza Walnut



Urban Wood



Metro Wood



Prestige Walnut



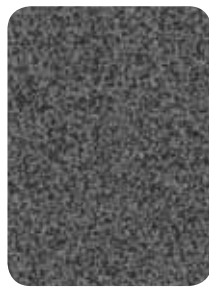
Fini Wenge



Brushed Silver



Storm



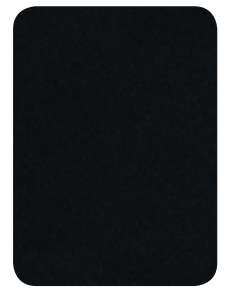
Ironstone



Graphite



Deep Anthracite



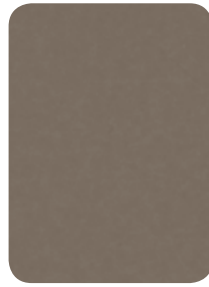
Black



Doe Skin



Velveteen



Bark



Iron Ore



Bliss Cinder



Mocha



Smoke Melange



Charred Oak



Straight Grain Wenge

= New in 2010

FORMICA COMMERCIAL OFFER

Colours	45
Delivery Lead Time	Next day delivery if the product comes from the state warehouse. Dispatched within seven working days if the product comes from factory stock. Your sales representative will advise about local stocking policy and indicative transportation time from the factory to your location.
Standard Particleboard Sheet Size	Either 2400mm x 1800mm sheet size or 3600mm x 1800mm sheet size – depending on state inventory policy (which reflects local demand). Plant stock is held in 3600mm x 1800 in 18mm and 25mm thicknesses. Indicated Standard Particleboard options in 2400mm x 1800mm (18mm and 25mm) and 3600mm x 1800mm (33mm) are Made to Order (MTO). Your sales representative will advise about local stocking policy and indicative transportation time from the factory to your location.
Standard Particleboard Thicknesses	18mm and 25mm are stocked for the 45 commercial colours. 3600mm x 1800mm (33mm) is available as MTO. Note that we hold normal commercial quantities of inventory. Large orders of individual line items may be considered to be MTO in the normal lead time.
Melamine Edging	22mm Preglued Edging is available for all colours in 50lm rolls. 22mm Unglued Edging is available for all colours in 100lm rolls.
ABS Edging	21mm, 22mm, 29mm and 38mm matching edgings are available in 100lm rolls for all 45 colours.
Made to Order	If substrates or thicknesses other than the Standard Particleboard (above) are required, customer service or your sales representative will identify options that are available and lead time. For complete details on the Formica Decorated Panel offer please refer to the Formica Availability Chart.



INFORMATION Visit formica.com.au for colour and design tips, technical information, care, maintenance and more.

ENQUIRIES Call 132 136.

SAMPLES Call 1800 002 204.

WARRANTY 7 year limited warranty. Visit formica.com.au to find out more.

Formica stockist

formica.com.au

Formica Commercial Colour Range are marketed and distributed by The Laminex Group, a division of Laminex Group Pty Limited ABN 98 004 093 092. The colours of the products featured within the imagery in this brochure are as close to the Formica Commercial Colour Range as photographic lighting and modern printing processes allow. Formica Commercial Colour Range is no different than any other material in that darker colours will always show scratches and superficial wear and tear more readily than lighter colours. Formica Commercial Colour Range should be protected from strong, direct sunlight as continuous exposure may cause discolouration or fading to the surface. Please obtain a copy of the terms and conditions of Formica Commercial Colour Range 7 year limited warranty from formica.com.au. This warranty is in addition to any rights that may exist under the Australian Consumer Law. **Formica**[®]